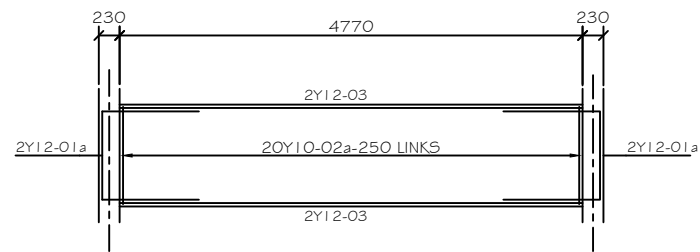
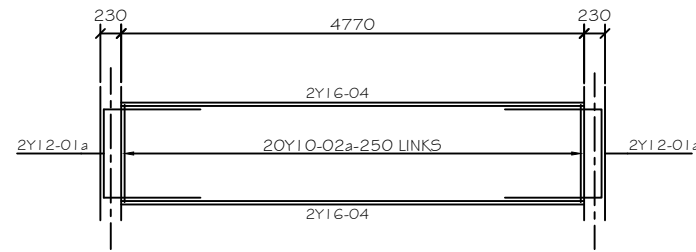


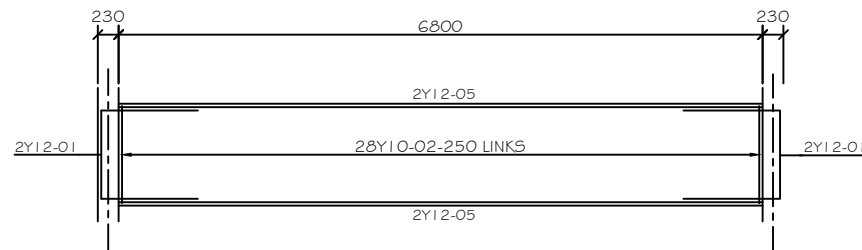
RING BEAM LAYOUT
SCALE 1:100



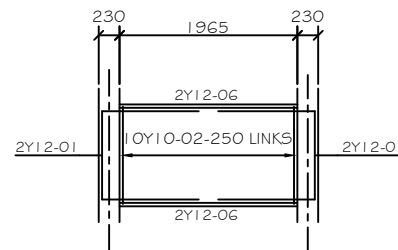
RBM 1 230x375 4Nos.
RBM 2#3, 1a SIMILAR



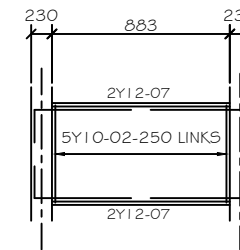
RBM 4 230x375 8Nos.
RBM 5,6,7,8#9, 4a, #7a SIMILAR



RBM 10 230x230 2No.
RBM 15 SIMILAR



RBM 11 230x230 3No.
RBM 12, 11a SIMILAR



RBM 13 230x230 3No.
RBM 14, #13a SIMILAR

BENDING SCHEDULE 1							
MEMBER & NO.	BAR MARK	TYPE & SIZE	No. OF MBRS	No. IN EACH	TOTAL No.	LENGTH (mm)	SHAPE
RBM 1: (230x230) RBM 1a,2&3 SIM 4No.	01a	Y12	4	4	16	1825	
	02a	Y10	4	20	80	825	
	03	Y12	4	4	16	4775	STR
RBM 4: (230x375) RBM 4a,5,6,7,8,7a &9 SIMILAR 8No.	01a	Y12	8	4	32	1500	
	02a	Y10	8	20	160	1200	
	04	Y12	8	4	32	4775	STR
RBM 10: (230x230) THUS RBM15 SIM 2No.	01	Y12	2	4	8	1375	
	02	Y10	2	34	68	825	
	05	Y12	2	4	8	8300	STR
RBM 11: (230x230) RBM 11a,&13, SIM 3No.	01	Y12	3	4	12	1375	
	02	Y10	3	10	30	825	
	06	Y12	3	4	12	2150	STR
RBM 13: (230x230) RBM 14&13a SIM 3No.	02	Y10	3	5	15	825	
	07	Y12	3	4	12	1050	

Notes

1. Read this drawing in conjunction with other architectural and engineering drawings.
2. Do not scale from this drawing, use the written or calculated dimensions.
3. Concrete grade to be 25MPa.
4. Cover to reinforcement: Ground slab - 25mm to mesh
5. Use precast r.c. lintels for all inside openings.
6. Foundation depth to be minimum 1400mm from natural ground level, actual to be determined by the Engineer on site.
7. All excavations and reinforcement to be inspected and approved by the Engineer on site.
8. Provide backforce after every third course from foundation to ground floor. Elsewhere provide after every fourth course.

AMENDMENT		Description :
Ltr.	date	

Ministry of Local Gvt, Public Works
and National Housing
P.O.Box 7706 , Causeway
Zimbabwe

ENGINEER L. CHIKWENHERE	Branch Head T.N. TSAHA	Ministry FINANCE	Centre MUTARE
Designed L. CHIKWENHERE	Scale AS SHOWN	Title ZIMRA STAFF ACCOMMODATION	
Drawn L. CHIKWENHERE	Date MARCH 2022	Description RING BEAM LAYOUT AND RING BEAMS	
Checked C. KANYASA	File Ref		
TELEPHONE 728201-9		G.P No	Project No /S/03