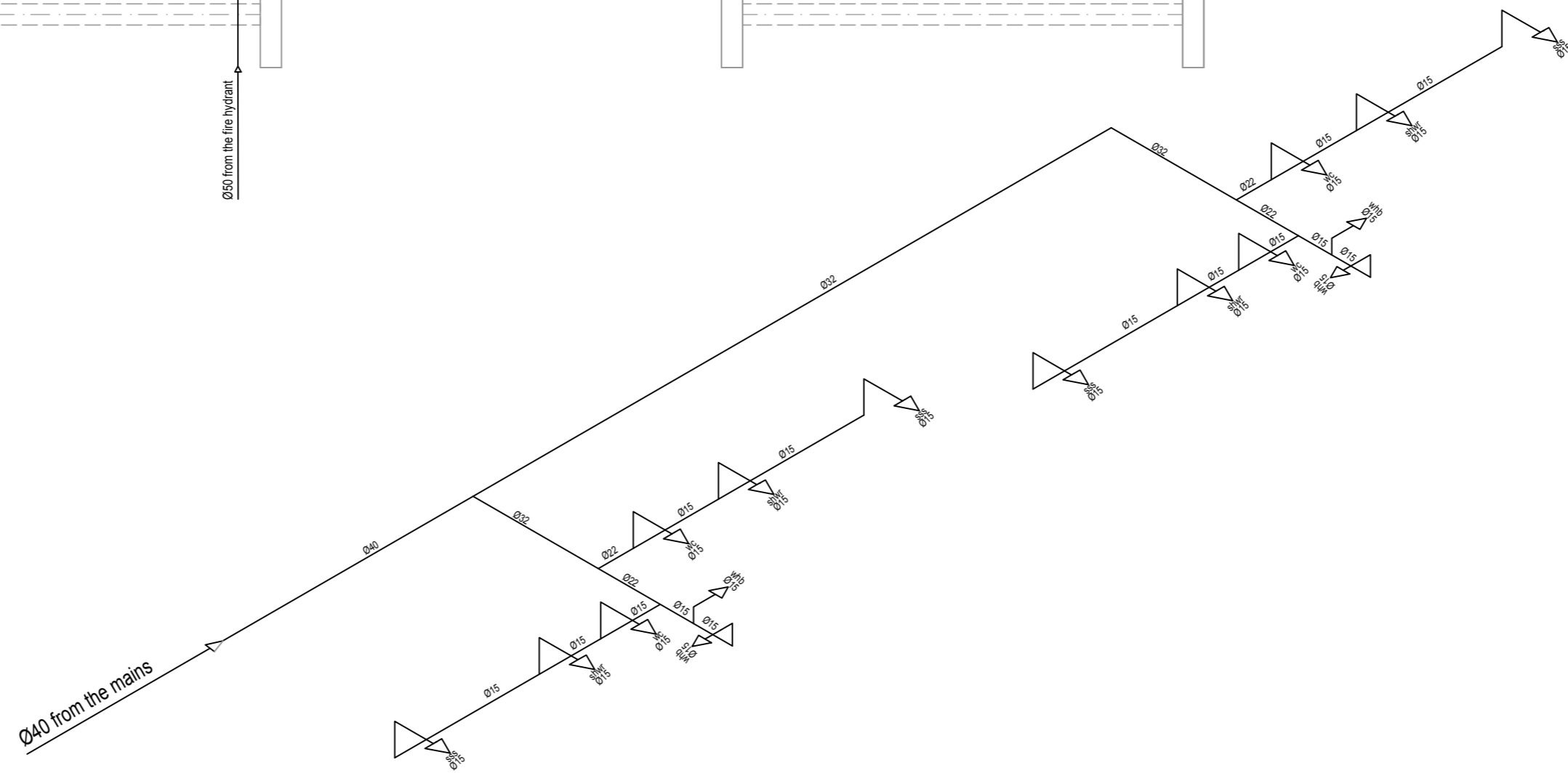


WATER RETICULATION NOTES

1. Water pipes shall be of copper to BS 2871 part 1 with fittings connex or similar approved compression or capillary fittings.
- 2 - Valves for cold water to be full-way gate valves to BS 1952-1956 or ball-valves.
- 3 - All pipes to be suitably supported by brackets or holder-batts fixed to walls.
- 4 - Spacing of pipe supports :
 - 18mm or less -2m;
 - 20mm to 28mm -2.5m;
 - 32mm to 50mm -3m
 with canvas lagging.
- 5 - All pipes through walls, beams and slabs are to be sleeved.
- 6.- Sleeves shall be black steel to BS 1387 medium or PVC tube.
- 7.- Space between pipe and sleeve shall be chalked with asbestos chord.
- 8.- No joints to be embedded in walls except for showers.
9. - All water lines to sanitary appliances to be valved.
10. - any discrepancies, errors or omissions to be brought to the engineer's attention immediately after being noticed.
11. WATER CLOSETS IN CELLS TO BE HEAVY DUTY FLUSH MASTER TYPE
12. WASH HAND BASINS IN CELLS ; PIPEWORK TO BE COVERED IN BRICK WORK WITH A DUCT ACCESSIBLE FROM THE OUTSIDE



Key

- W.H.B- Wash Hand Basin
- W.C - Water Closet
- S.S.S - Stainless Steel Sink
- S.H.W.R - Shower
- F.H.R - Fire Hose Rill
- F.E - Fire Extinguisher

SCHEMATIC DIAGRAM

Notes	Amendment			Description
	Ltr:	Init:	Date:	

MINISTRY OF LOCAL GOVERNMENT AND PUBLIC WORKS
P.Bag CY7755
CAUSEWAY
HARARE

Engineer: W. ZVEMOYO	Director: E.Njoma	CLIENT: ZIMRA	Centre: UMGUZA
Designed: W. ZVEMOYO	Section Head: D. TAKAINDISA	Title: ZIMRA STAFF ACCOMMODATION	
Drawn: W. ZVEMOYO	Scale: NTS	Description: WATER RETICULATION & FIRE FIGHTING SYSTEM	
Checked: E KWEZERA	Date: 08/ 2022	G.P. No.	Stock Dwg. No.
TELEPHONE: 728201/9	Project No. 19251/M/01	Ament.	